

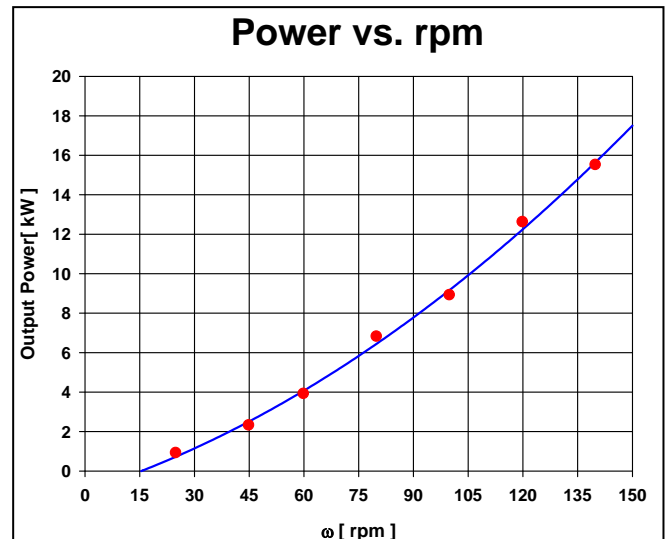
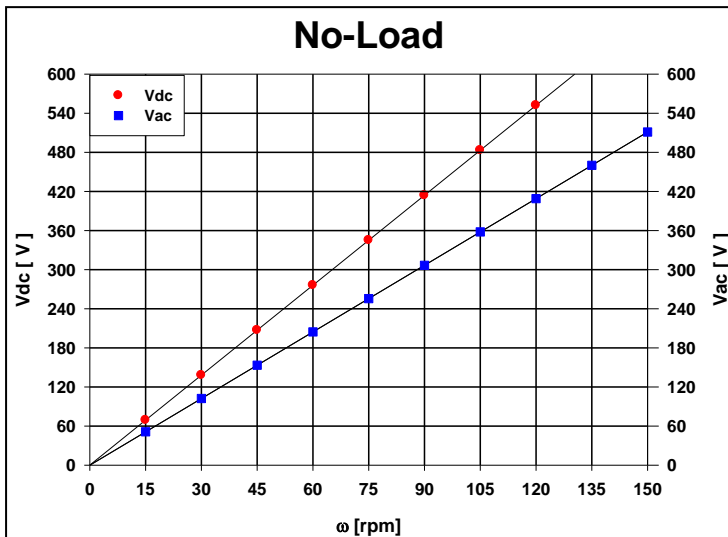
# PMSG For Small Wind Turbine & Hydro Power

## Skew, Low Cogging Torque, High Efficiency...

**Model : SWEG12K-AC120-I**

	Symbol	units	
Output power	P <sub>o</sub>	kW	12
Rated speed	ω	rpm	120
Output Voltage	E	V	3phase, 380(Line-Line)
Max. Efficiency	η	%	94
Rotor			Permanent magnet
Number of Pole	-	-	30
Speed Constant	K <sub>E</sub>	Vdc/rpm	4.6
Resistance at 20 °C(Line-Line)	R <sub>T</sub>	Ω	1.79
Inductance ( Line-Line)	L	mH	24.9
Rotor Inertia	J	Kg-m <sup>2</sup>	1.47
Maximum Temperature	C <sub>Max</sub>	°C	150
Winding			Wye
Starting Torque		Nm	< 10
Shaft Play-Axial		mm	< 0.2
Gen. Weight	Wg	Kg	210

**Note: Shaft-Stainless Steel, Al-Housing, Bearing- NSK or NTN**



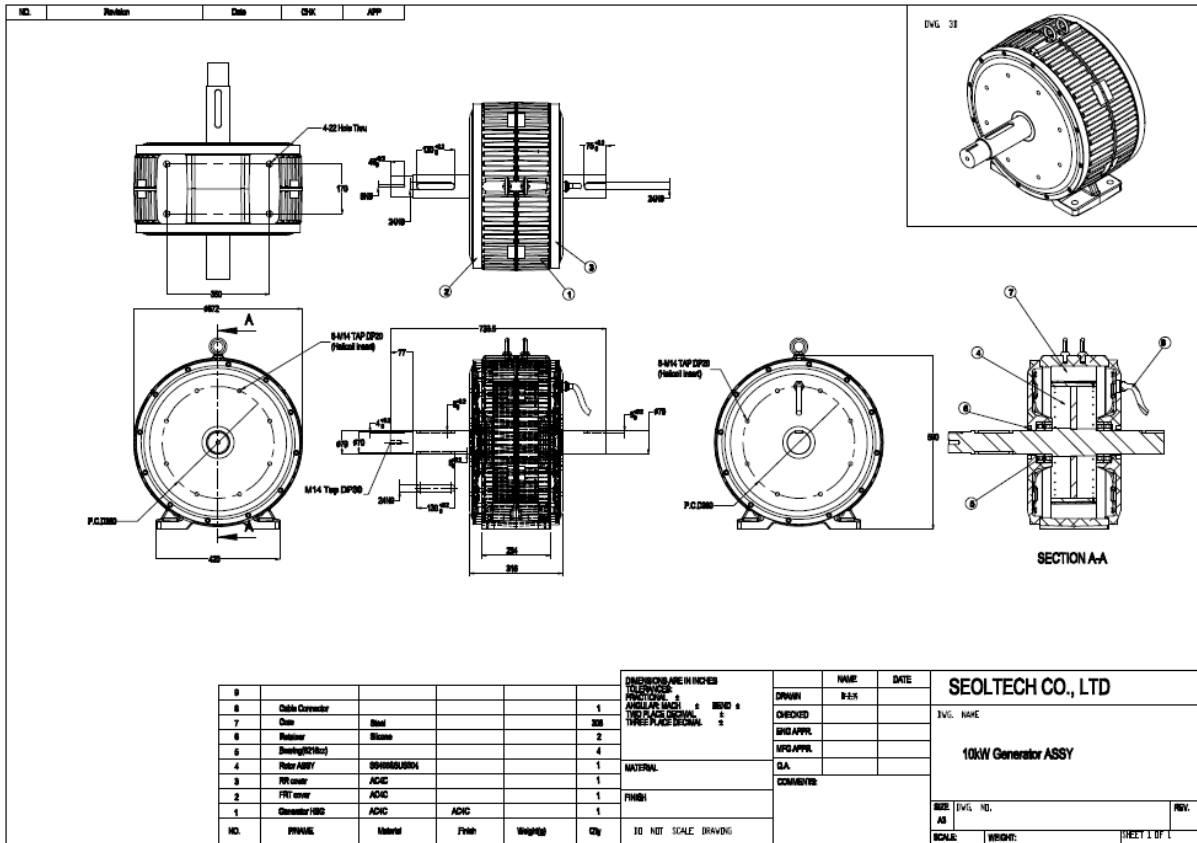
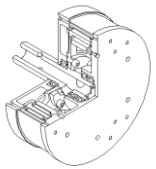
**SEOLTECH CO.,LTD.**

29, Seongseogongdanbuk-ro 65-gil, Dalseo-gu, Daegu, Korea 704-900

Tel : 82.53.580.7400 Fax : 82.53.580.7499

E-mail: skywindearth@skywindearth.com & st@seoltech.com





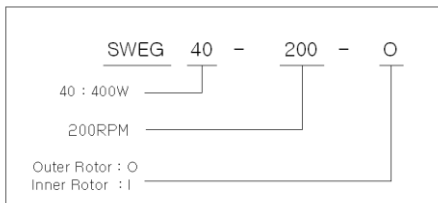
Checklist Category-

1. Dimension and Tolerances
2. Output power, Voltage, Rpm
3. Insulation Resistance Examination
4. Starting Torque
5. Output wire 4SQ X 3C (red, white, black)

Result

GEN. SERIAL NO. : ST10

● Ordering Information



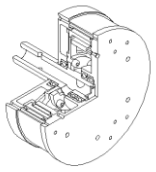
SEOLTECH CO.,LTD.

29, Seongseogongdanbuk-ro 65-gil, Dalseo-gu, Daegu, Korea 704-900

Tel : 82.53.580.7400 Fax : 82.53.580.7499

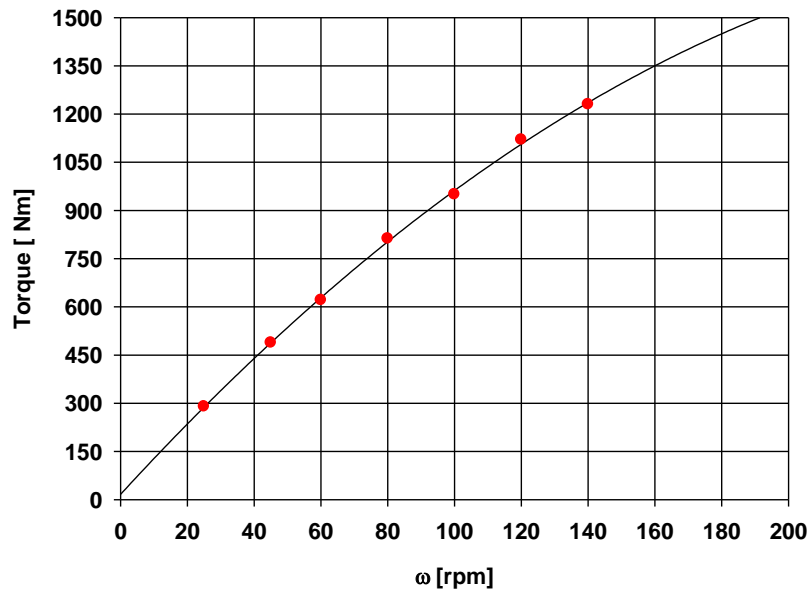
E-mail: skywindearth@skywindearth.com & st@seoltech.com





Note: Frame type, Housing Material: Al;

### Torque vs. rpm



**SEOLTECH CO.,LTD.**

29, Seongseogongdanbuk-ro 65-gil, Dalseo-gu, Daegu, Korea 704-900

Tel : 82.53.580.7400 Fax : 82.53.580.7499

E-mail: skywindearth@skywindearth.com & st@seoltech.com

