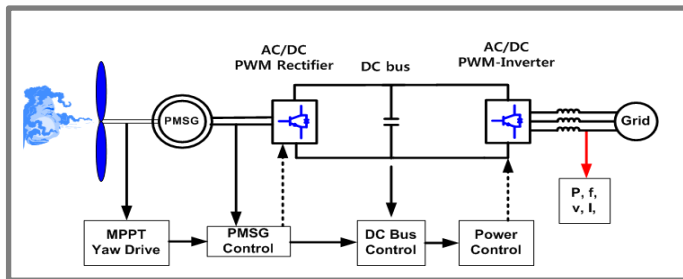
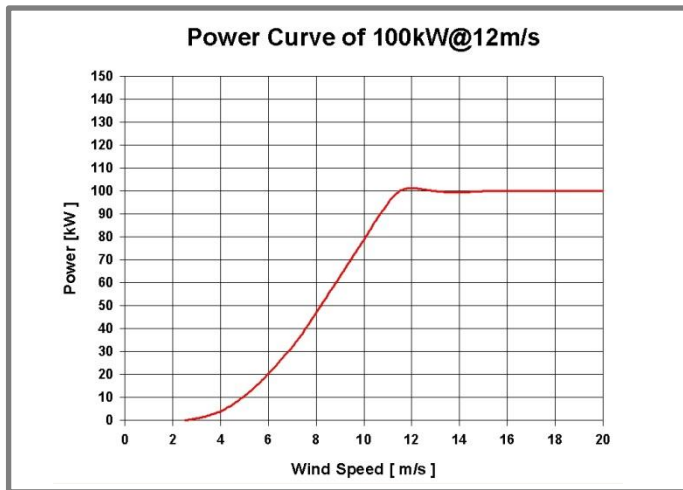
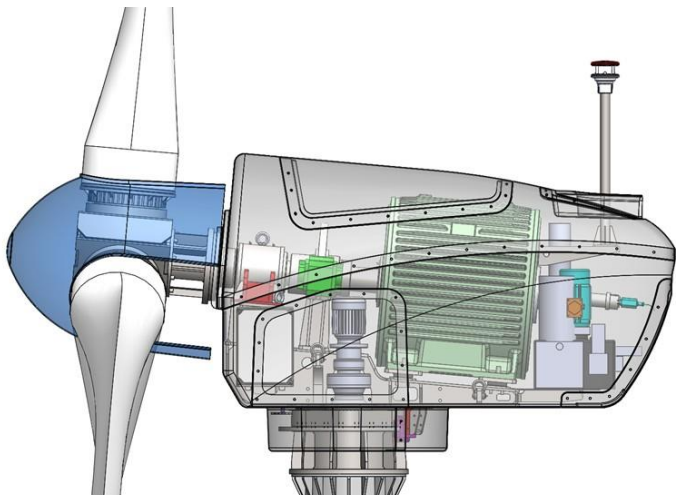


WindRose-100kW Turbine

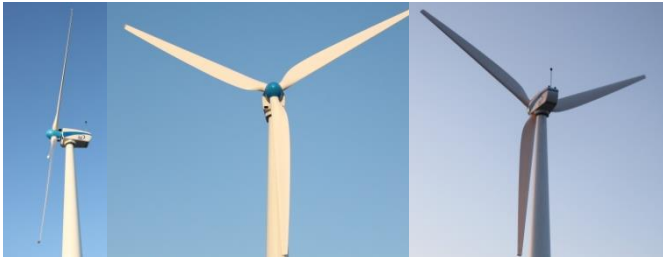
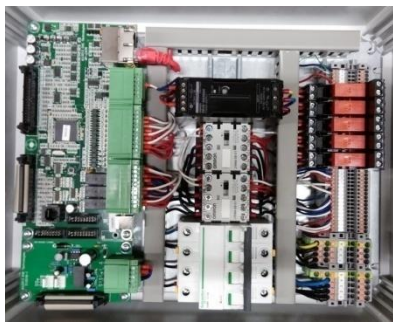
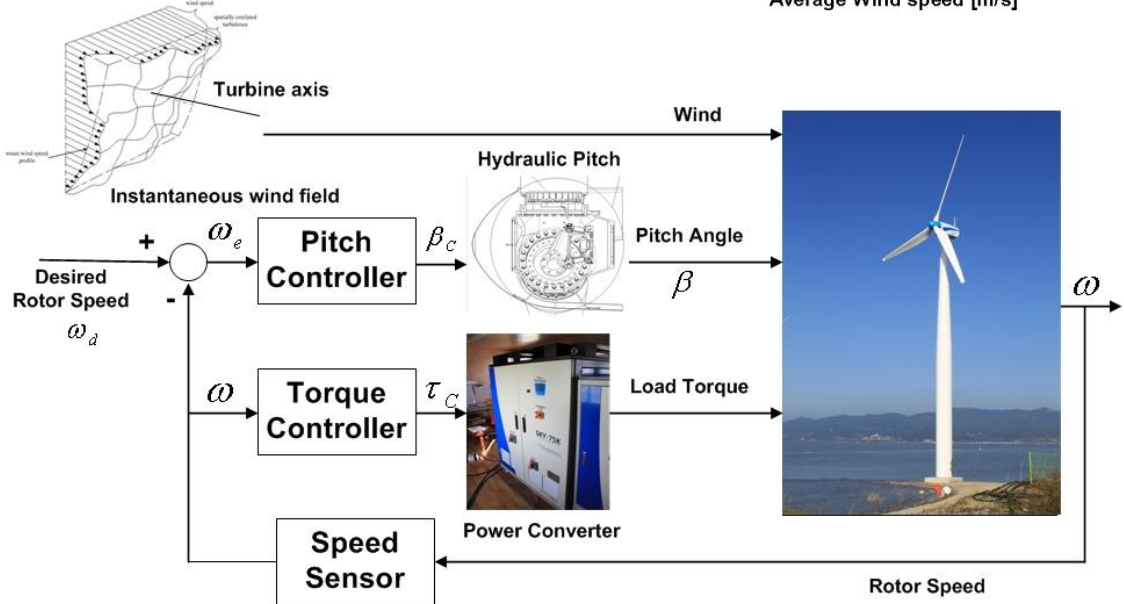
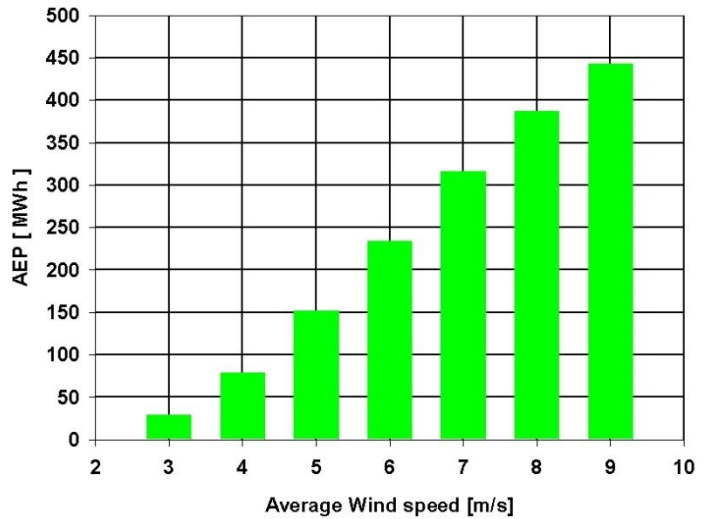


Wind Turbine Specification	
Rated Power	100kW@ 12m/s
SWT Class	III
Tip Speed Ratio	6~7
Rotor diameter	19.5 m
Swept Area	298.5 m ²
Rotor RPM	60
Cut in Wind speed	2.5 m/s
Hub	Cast Steel
Blade Airfoil	ROY 1235
Material & Surface Treatment	GFRP/Resin Urethane painting
Brakes	Disc Brake, Pitch, Yaw
Yawing	Active Electric motor
Tower	24~30 m
Design Life	20 yrs
Design Standard	IEC61400-2, 23

Low Wind Speed Turbine

- Green & Clean Energy
- Unlimited & Free Energy
- More Cost Effective
- *Variable Speed, Pitch controlled*
- *DD, Permanent magnet synchronous generator*
- *Active yaw drive system*
- *High reliability and low maintenance Wind Turbine*
- *High AEP*
- *5 Year Warranty*

WindRose-Annual Energy Production(AEP)





SEOLTECH Co., Ltd
 T E L : +82-53-580-7400
 F a x : +82-53-580-7499
 E - mail : st@seoltech.com
 rosa@seoltech.com
 Website : <http://www.seoltech.com>
<http://www.skywindearth.com>